

KK-1 Creeper Keepers Instructions (Patent No. 6382891)

Thank you for purchasing a TrimmerTrap product. The KK-1 eliminates damage to mowers and other equipment by preventing it from rolling around on the trailer. The KK-1 consists of three basic parts:

EP-1 Equipment Plate is a flat plate with a large stud welded to it that attaches to the equipment.

CP-1 Connector Pin Assembly is a $\frac{3}{4}$ " diameter pin with the bottom plate attached and a large tab at the top. The CP-1 installs into floor.

UP-1 Upper Floor Plate is a flat plate with a special keyway. The UP-1 attaches onto the top side of floor.

When installing the KK-1, carefully choose a mounting location for the CP-1. Check the underside of floor for interference and clearance when the Connector Pin is in the lowered position. Using a 1 & $\frac{7}{8}$ " hole saw, drill a hole in the floor. Center the UP-1 over the hole. Using the UP-1 as a template, drill two $\frac{3}{8}$ " holes next to the 1 & $\frac{7}{8}$ " hole. (see FIG. 1) Install the CP-1 from the under side of the floor. Align both upper and lower plates with the $\frac{3}{8}$ " holes and bolt the plates together (with the floor in between) using the carriage bolts (inserted from the top) and lock nuts provided. (see FIG. 2) Next, attach the EP-1 to a vertical surface of sufficient strength on the equipment with the plate horizontal and the hole in the stud vertical. Be certain to check for clearance and interference. When the KK-1 is installed on a 1 & $\frac{1}{2}$ " thick floor, the center of the stud on the EP-1 can be mounted up to 5 & $\frac{1}{2}$ " above the floor. If installed onto a thinner floor, spacers should be used between the bottom of the floor and the topside of the bottom plate attached to the CP-1. This will insure that the CP-1 will fully recess into the floor. Use the two $\frac{3}{8}$ " bolts and lock nuts provided or the equivalent to attach the EP-1.

After positioning the equipment, simply raise the CP-1 and slide it over the stud on the EP-1, secure with a lynch pin. (see FIG. 3) A padlock can be installed in place of the lynch pin for security. When not in use, the CP-1 will recess into the trailer floor when lowered. Make sure the tab on the top of the CP-1 aligns with the keyway in the UP-1. (see FIG. 2) Do not store the lynch pin in the EP-1 when the equipment is disconnected. Although the pin will not recess quite as far, the lynch pin can be stored in the hole at the top of the CP-1. NEVER attempt to connect or disconnect equipment while it is running or when the truck or trailer is not level. The KK-1 is not in any way designed to secure equipment for transport or to be used in place of parking brakes, tie downs, side rails, tailgates, etc. The weight limit for a KK-1 is 1,000 pounds.

<u>KK-1 Parts List</u>	<u>Quantity</u>
carriage bolt	two
$\frac{3}{8}$ " bolt	two
$\frac{3}{8}$ " nylon lock nut	four

FIG. 1 Solid line represents UP-1
Broken line represents drilled holes.

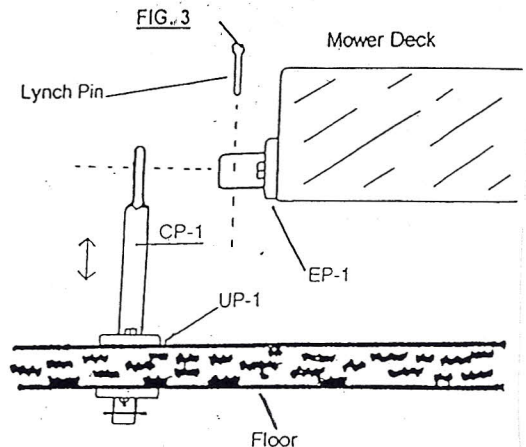
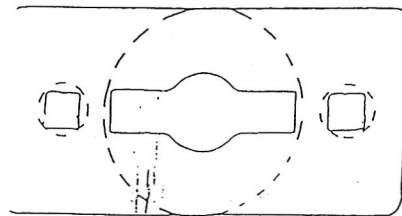
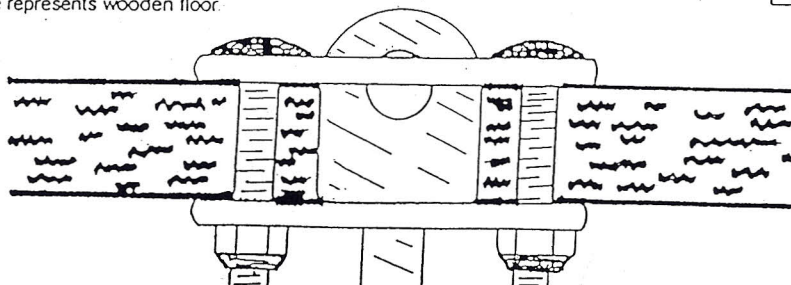


FIG. 2 Cut-a-way view of KK-1 and floor.
Heavy line represents wooden floor.



WARRANTY: 90 days against defects in material and workmanship, TrimmerTrap, Inc. reserves the right to repair or replace at its sole discretion the alleged defective TrimmerTrap product. Determination of validity of alleged defect claim will be made upon goods returned to us freight prepaid to our location in Louisville, KY. Call 1-800-279-8727 for a return goods authorization.