

Automatic Tire Chain Replacement Parts

Parts List for Reordering Components of 3008935

Part 3008935 (Main Wheel) Replaces:

Onspot™: 0925-AL/AR

Rud™: 68850

Insta-Chain™: 0951

Note: Use the larger holes when replacing Part No. 0951 & the smaller holes for 0925-AL/AR & 68850

Bill of Materials for Buyers' Components

ITEM	PART NO.	QTY.	DESCRIPTION
1	3008598	1	Wheel, Rubber, Assembly Complete
2	3008595	2	Bearing, .785 ID x 1.85 OD x .55 THK
3	3008596	1	Washer, Flat .815 x 1.5 x .12
4	3008597	1	Ring, Internal Snap, 1.87 x .06
5	400	1	Grease Fitting, 1/4-28 STD

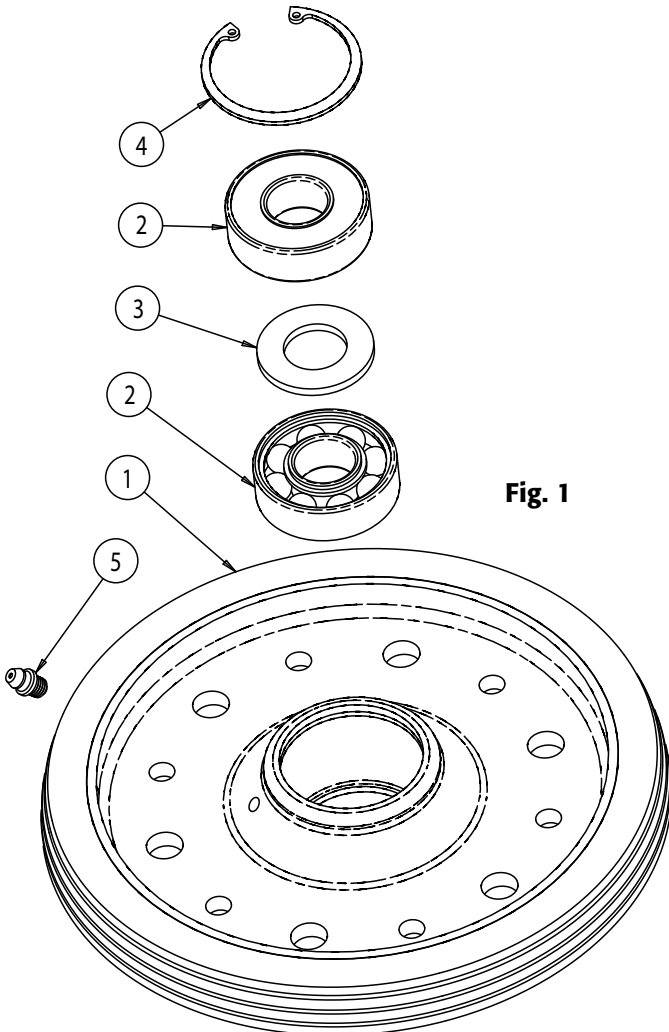


Fig. 1

Note: The chain ring (available as 3008274; see figure 2) must be bolted to the wheel with grade 8 bolts, steel locking nuts, & washers (not included).

Part 3008274 (Chain Ring) Replaces:

Onspot™: 0927-AL/AR

Rud™: 68843

Insta-Chain™: 0961

Note: Mounting holes will need to be drilled larger when replacing Part No. 0961

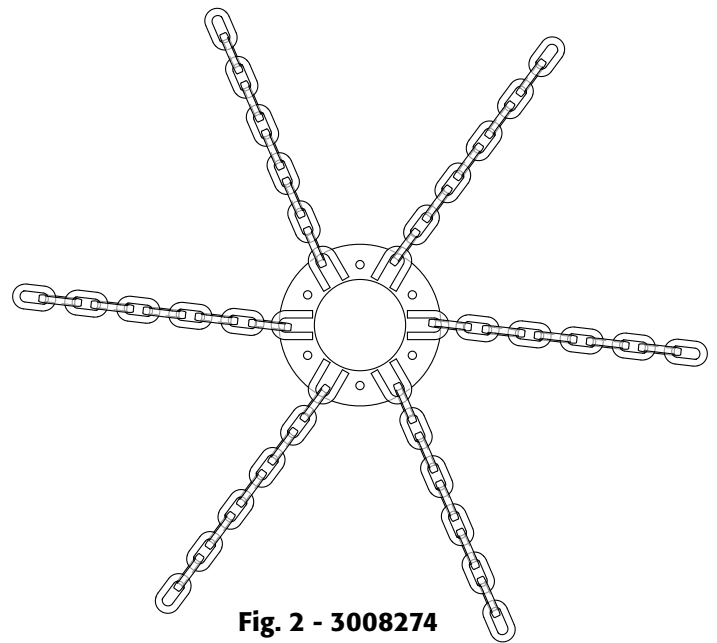


Fig. 2 - 3008274

Note: Chains are bi-directional. They work for both left and right sides. Black powder coat finish.